



**nova  
struct**®

# Case Study

Woodhouse Mill, Todmorden

Residential

**Shape  
your vision**

# Mimicking Original Fenestration

The sympathetic refurbishment of formerly derelict Woodhouse Mill, a six-storey Grade II listed building situated on the bank of the Rochdale canal on the outskirts of Todmorden, features Novastruct's GT 70 S windows, as replacements for the mill's original steel windows.

Built in 1832, Woodhouse Mill was on the Listed Buildings at Risk register until local business man Charles Moran, of Langdale Estates Ltd, had the vision to save the building and turn it into a stylish residential development.



“Sympathetic refurbishment”

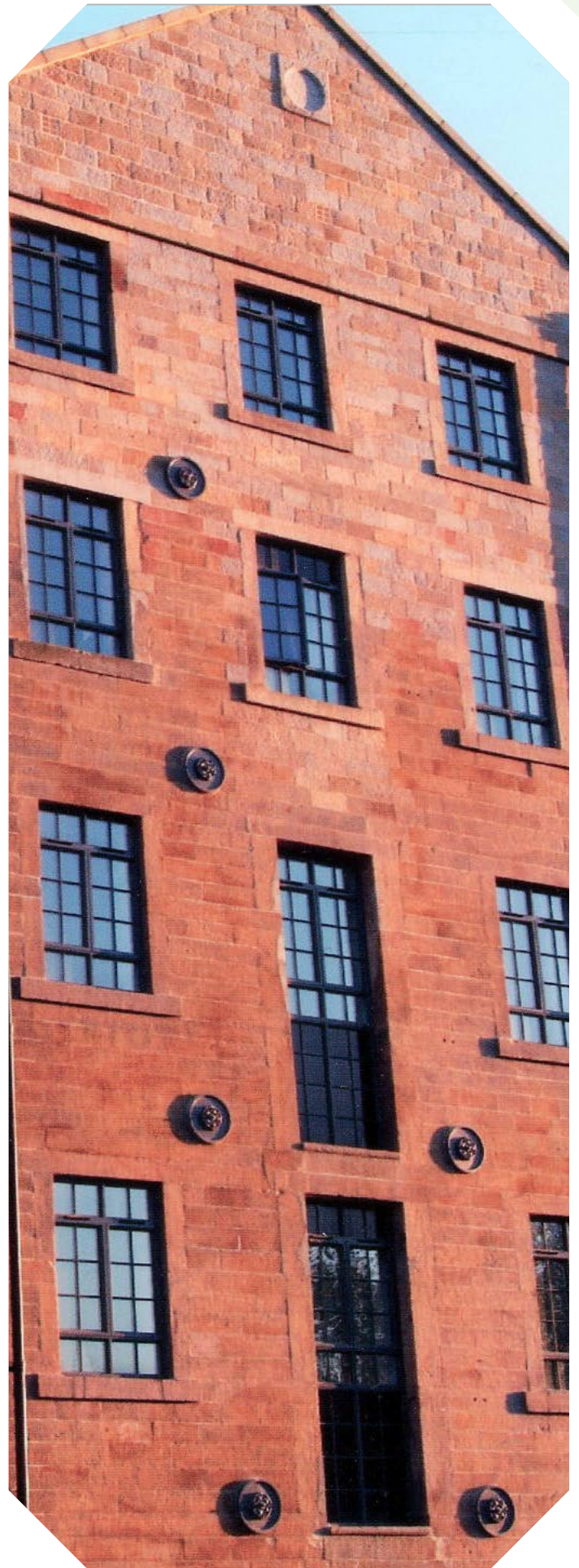


Building: Woodhouse Mill  
Location: Todmorden  
Architect: Ramsden Barrett Architects

# Extensive Consultation

Constructed from stone, the mill has had a completely new structure erected inside its walls; previously it had lost its roof in a fire and had seen the collapse of an end gable wall.

The refurbishment process involved extensive consultation with planners and bodies such as English Heritage and the Victorian Society, with the intention to retain as many of the mill's original features as possible.



# Slim Sightlines

Commenting on the refurbishment of the fenestration, Graham Newton of Ramsden Barrett Architects said: "The existing openings have mostly all been retained as windows or doors, including the extra height doors that face onto the canal, from where the materials produced at the mill would have been loaded onto canal boats. The planners allowed the end gable wall to be rebuilt incorporating balconies and patio doors.

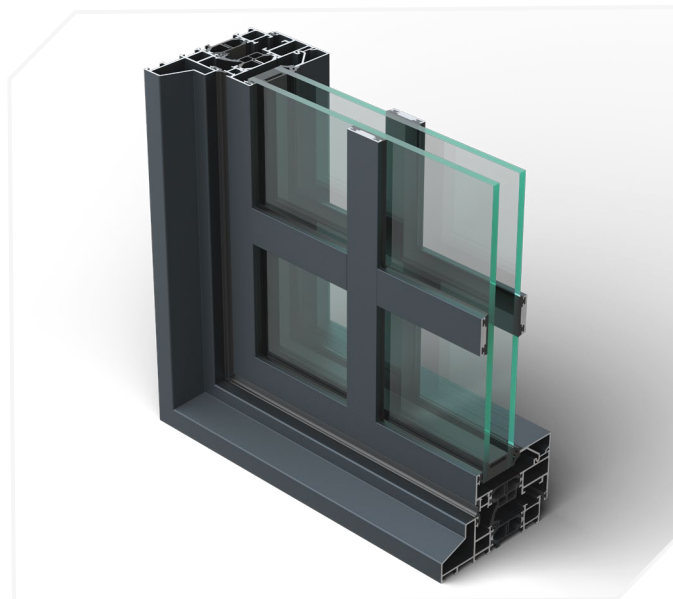
"The Novastruct GT 70 S window was chosen because of its slim sightlines, which make it a suitable choice for refurbishment projects like Woodhouse Mill, where there is a requirement to retain the traditional elegance of the original steel windows.

"As none of the walls are true, the installer had to measure every opening and individually label each fabricated window."

The GT 70 S windows have a dark grey polyester powder paint finish and are double glazed with clear glass, except where infill panels have been installed and etched glass fitted to bathroom areas.



# Product Specification Highlights



GT 70 S Open-In Window

**Novastruct UK**

Astmoor Road  
Astmoor Industrial Estate  
Runcorn, Cheshire  
WA7 1QQ  
United Kingdom

Tel.: + 44 (0)1928 502500  
Mail: Sales.UK@novastructeurope.com

[www.novastructeurope.co.uk](http://www.novastructeurope.co.uk)

Shape  
your vision

 nova  
struct®