

Case Study

Stafford College Skills & Innovation Centre

Education

Shape
your vision

Transformative Specification

Located in the heart of Stafford Town Centre, Newcastle and Stafford Colleges Group's Stafford College Skills & Innovation Centre is a cutting-edge learning facility and one of the first projects delivered in accordance with the Department For Education's Further Education Output Specification.

Designed by Ellis Williams and constructed by Bowmer + Kirkland, it is a striking 7,500m², three-storey building, housing a range of skills, construction, engineering and motor vehicle courses with a variety of social/study spaces together with a 300-seat auditorium, four-court sports hall and a fully-equipped gym.



“A cutting edge learning facility”



Helping to bridge the STEM skills gap, the Centre features augmented reality (AR) and virtual reality (VR) in classrooms to replicate real-life situations.

Building: Stafford College Skills & Innovation Centre
Location: Stafford
Architect: Ellis Williams
Main Contractor: Bowmer + Kirkland
Installer: Vitrine

Flagship Environment

Installed by Vitrine, Novastruct curtain wall, door and window solutions were chosen for the Skills & Innovation Centre, playing a key role in achieving a flagship learning environment.

The following Novastruct solutions were selected for the project:

- FSX 100 Curtain Wall System: Outstanding performance and ease of installation.
- FSX 110 Curtain Wall System: Exceptional weather performance and design flexibility.
- DSX 190 TB Door: Robust construction for use in heavy/severe applications.
- WSX 720 Reflex Open Out Casement Window: Advanced thermal break technology.

Picking up the curved return of a previous development, the Centre's two impressive glazed screen frontages (one 37m long, the other 18m), feature the mullion-drained FSX 110 65mm Curtain Wall System, creating a transparent and inviting facade that mirrors the building's aspirational and inspirational nature.

A bespoke faceted double-nose FSX 110 mullion carries a 33mm thickness 9.5m tall triple-laminated glass fin detail for solar shading, creating a stunning design feature, intended to reinforce a civic presence by day and nighttime, offering students excellent views over the landscaped plaza and providing a vital connection between interior and exterior settings.

FSX 110 also features on an additional 18m long entrance area with vertical timber-effect aluminium sunscreening fins fixed to mullions.

The zone-drained FSX 100 50mm Curtain Wall System has been used on a number of elevations and Novastruct WSX 720 Reflex Open-Out Casement Windows in a top hung configuration act as curtain wall vents throughout the building.

Door choice was Novastruct's DSX 190 TB all-purpose door for use in high traffic areas and automatic entrances in sliding and open in/out single and double swing variants.

Exposed aluminium areas of our systems used on the project are in Permacover Anthracite Grey (RAL 7016) or Dusty Grey (RAL 7037) finishes to Qualicoat Class 1

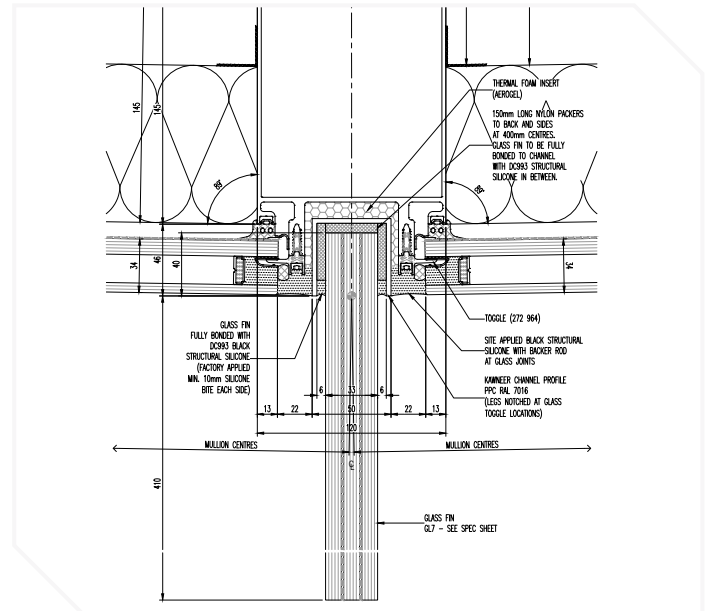


Instant Impact

Stafford College Skills & Innovation Centre has rapidly made a transformative impact, both in terms of its architectural merit and the students and community it serves. Since the building officially opened in September 2023, the Newcastle and Stafford Colleges Group has reported a 25% increase in applications and open day event attendance has almost doubled, confirming a very positive reaction to the distinctive new building's architecture and its state-of-the-art facilities.

The end result is a complex that enhances the student experience and is pivotal for the College's vocational training offer, helping to bridge the Stafford region's skills gap, create better employment opportunities for students, as well as playing a vital role in revitalising the town.

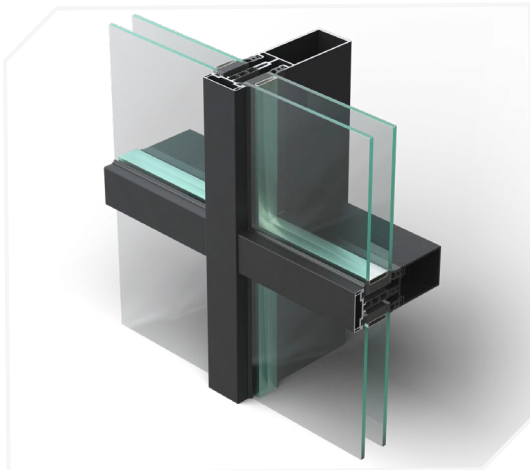
Contact our team today if you are looking for bespoke architectural glazing solutions that can help to make a similar statement on your next project



Cross-Section of Curtain Wall System



Product Specification Highlights



FSX 100 50mm Curtain Wall System



FSX 110 65mm Curtain Wall System



**WSX 720 Reflex Open Out
Casement Window**



DSX 190 TB Door

Novastruct UK

Astmoor Road
Astmoor Industrial Estate
Runcorn, Cheshire
WA7 1QQ
United Kingdom

Tel.: + 44 (0)1928 502500
Mail: Sales.UK@novastructeurope.com

www.novastructeurope.co.uk

**Shape
your vision**

**nova
struct**