



**nova
struct**®

Case Study

Nottingham Trent University
Design & Digital Arts Building

Education

**Shape
your vision**

Advancing Skills

Located in Nottingham City Centre, Nottingham Trent University's Design & Digital Arts Building creates a landmark campus presence and an outstanding addition to the city's skyline.

The multi-storey complex has been designed to further help students to prepare for professional, technical and commercial careers in cultural and creative settings, including graphic design, illustration, motion graphics, UX design, filmmaking, television production, animation, games design and visual effects.

Designed by Hawkins\Brown, delivered by local architects CPMG and built by Bowmer + Kirkland, the Design & Digital Arts Building houses cutting-edge facilities for film, animation, motion graphics, visual effects and motion capture. There are collaborative studio spaces, a virtual production studio plus incamera VFX and black box studios.



“Outstanding addition to the city’s skyline”



The building additionally provides exhibition areas, editing suites, a sound studio and a café.

Building: Nottingham Trent University Design & Digital Arts Building
Location: Nottingham
Architect: Hawkins\Brown/CPMG
Main Contractor: Bowmer + Kirkland
Installer: Vitrine

Matching Zero Carbon Aims

Novastruct curtain wall, door and window solutions augment the striking presence of the Design & Digital Arts Building and assist in the achievement of carbon credentials that match Nottingham Trent University's zero-carbon commitment.

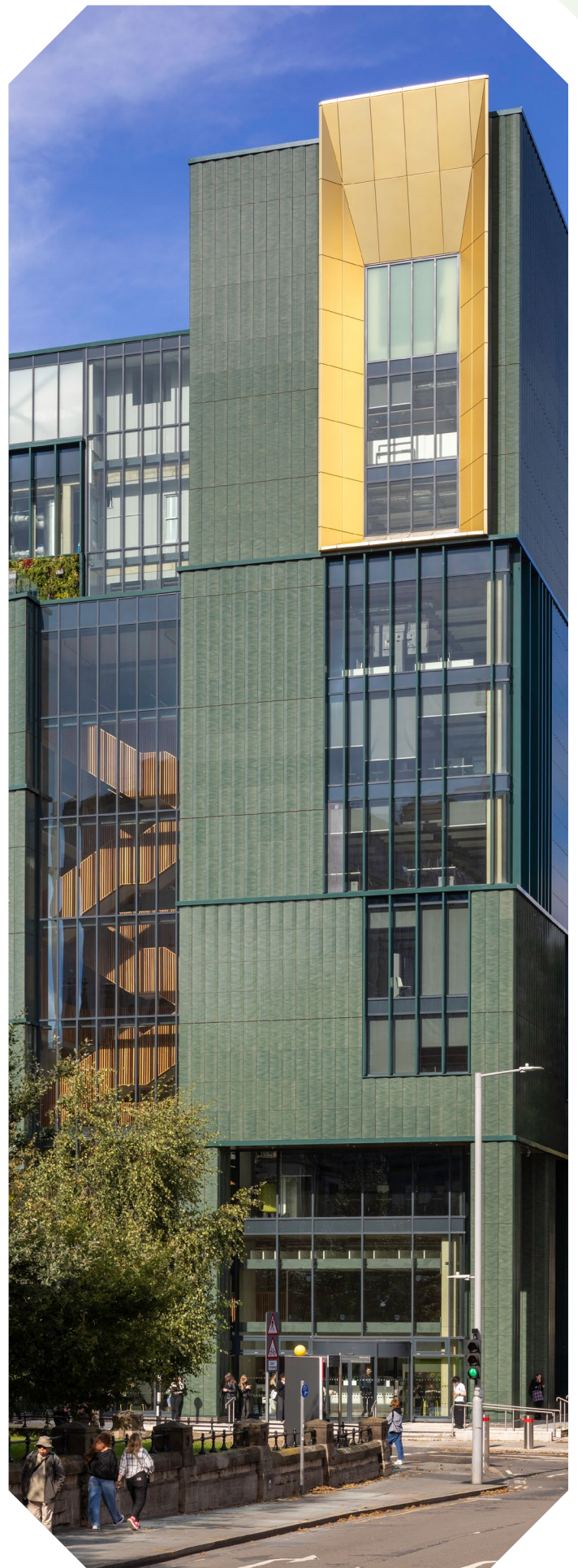
The following Novastruct solutions were selected for the project:

- FSX 110 Curtain Wall System: High level thermal performance, matched by outstanding aesthetic and design versatility.
- DSX 190 TB Door: The only door with welded construction, supported by a Lifetime Guarantee.
- WSX 720 Reflex Open Out Casement Window: A narrow-frame, open-out window for optimal aesthetics and thermal performance.

The FSX 110 Curtain Wall System features on various elevations of the building, some with 300mm deep feature mullion fins.

Entrance doors on the project comprise Novastruct's DSX 190 TB high-traffic all-purpose door, used in an open-out door-and-a-half configuration on two curtain wall elevations.

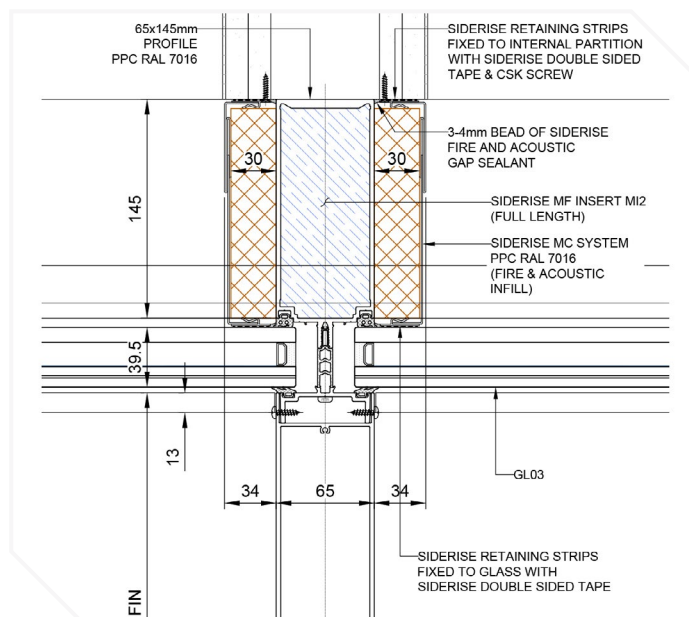
Novastruct's WSX 720 Reflex Open Out Casement Window is used as bottom-hung open-out vents on two elevations. Most aluminium areas of Novastruct systems are in Anthracite Grey (RAL 7016) 30% gloss finish to Qualicoat Class 2. Fins are in a special Light Green PPC. Sleek and elegant A-Vesta handles were used, facilitating a precise colour match, achieving Class 5 corrosion resistance.



Revitalised Learning Hub

Since opening, the Design & Digital Arts Building offers an enhanced platform to prepare graduates for careers in the fastest growing sector in the UK economy. It further positions the City of Nottingham as a major hub for the cultural and creative industries, Nottingham Trent University has been teaching art and design since 1843 and its latest facility is already adding considerable weight to its well-established reputation.

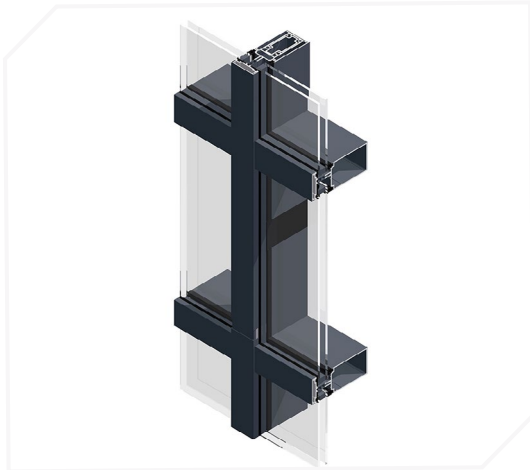
Contact our team today if you are looking for bespoke architectural glazing solutions that can help to make a similar statement on your next project.



Curtain Wall Mullion Plan Detail



Product Specification Highlights



FSX 110 65mm Curtain Wall System



**WSX 720 Reflex Open Out
Casement Window**



DSX 190 TB Door

Novastruct UK

Astmoor Road
Astmoor Industrial Estate
Runcorn, Cheshire
WA7 1QQ
United Kingdom

Tel.: + 44 (0)1928 502500
Mail: Sales.UK@novastructeurope.com

www.novastructeurope.co.uk

**Shape
your vision**

**nova
struct®**