

Case Study

Mercado, Groningen,
The Netherlands

Residential

Shape
your vision

International Allure

With the completion of Mercado and the redesign of Rode Weeshuisstraat, the northern part of Groningen's city centre has received a genuine boost in quality. With its expansive glass facades, large roof gardens, and lushly planted terraces, Mercado is a building of international allure, comparable to chic, modern complexes found in London and New York.

Mercado is a mixed-use building featuring a commercial plinth topped by 41 luxury apartments and penthouses.

The double-height space of the market hall, featuring monumental columns, possesses a timeless aesthetic. These columns lend the building true character, both inside and out.



“A vibrant public space!”

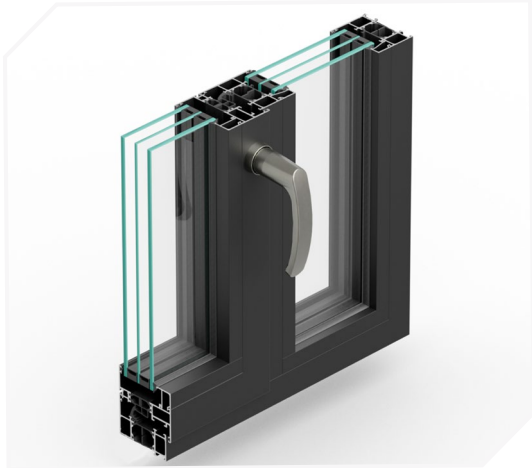


The large windows create a beautiful visual connection between the building and its surrounding urban environment. To achieve this, the architects selected the Novastruct RT 72 Reflex window system complete with a French balcony (featuring integrated fall protection).

A vibrant public space!

Building: The Graafschap College
Location: Doetinchem, The Netherlands
Architect: De Zwarte Hond + Loer architecten
Main Contractor: Plegt-Vos Noord BV
Installer: Alkondor

Product Specification Highlights



**RT 72 Reflex Aluminium
Open-In Window**

Project Photos: Dirk Verwoerd

Novastruct UK

Astmoor Road
Astmoor Industrial Estate
Runcorn, Cheshire
WA7 1QQ
United Kingdom

Tel.: + 44 (0)1928 502500
Mail: Sales.UK@novastructeurope.com

www.novastructeurope.co.uk

**Shape
your vision**

 **nova
struct®**