

Case Study

London Screen Academy

Education

Shape
your vision

Facade Transformation

Architectural glazing systems by Novastruct, including aluminium heritage-style GT 70 S windows appropriate for the conservation area, have helped to transform the façade of an old radio and television factory into the new four-storey London Screen Academy building at Highbury Grove in Islington, North London.

Novastruct's GT 70 S Open-In windows were the "focal new element" of the renovation of the façade of the four-storey building at Highbury Grove in Islington, north London, where Novastruct's FSX 100 zone-drained curtain walling and series DSX 190 TB entrance doors also feature.

The GT 70 S windows with narrow sightlines were installed over 12 weeks by a team of eight from specialist sub-contractor and Novastruct dealer JPJ Installations throughout the 8,050m² building, with the FSX 100 curtain walling, which also has narrow 50mm sightlines, used on the rear elevation and the series DSX 190 TB severe-duty welded doors used on the main entrance.



“Appropriate for the conservation area”



This cutting-edge free school by the Department for Education provides world-class film industry focused vocational training, including behind-the-camera roles, costume design, production management, distribution and marketing, alongside a broader curriculum, for 17 to 19-year-olds.

Building: London Screen Academy
Location: London
Architect: Architecture Initiative
Main Contractor: Willmott Dixon
Installer: JPJ Installations

Inspirational Learning

Procured through the Southern Construction Framework, main contractor Willmott Dixon Interiors worked closely with the design team from Architecture Initiative to deliver the project over 13 months, ready for the first intake of students. Sponsored by Working Title Films, the end user is the Day One Trust.

The building, also formerly a London Metropolitan University facility, was subject to a dramatic internal reconfiguration, with the core of the deep-plan multi-storey industrial space demolished and replaced with a steel-framed three-storey film production studio and supporting facilities.

The general teaching and workshop spaces wrap around the centre core, responding to and utilising the existing external envelope which has remained largely unaltered in appearance. The insertion of a new rooftop courtyard with film theatre and extensive views over London completes the arrangement and provides informal social space for staff and students.

Architecture Initiative's brief was to design a creative education facility that would provide an inspirational learning environment alongside specialist technical facilities to train students in all aspects of digital and film technologies.

The practice's Lee Mainwaring said: "We combined the natural features of the existing building - large windows, generous floor-to-ceiling heights, exposed finishes - with state-of-the-art new technical training facilities based on extensive research and analysis of professional film studios, to create a unique building for students and the wider community.

"The building is in a conservation area so any works to the external façade were carefully considered. We also needed to work with current building regulations for schools to ensure we could provide a safe learning space but which also enabled us to make the most of the existing building and provide professional standard technical spaces.

"The local authority planners were really happy with the upgrades to the existing building façade which had been unsympathetically altered in previous times."



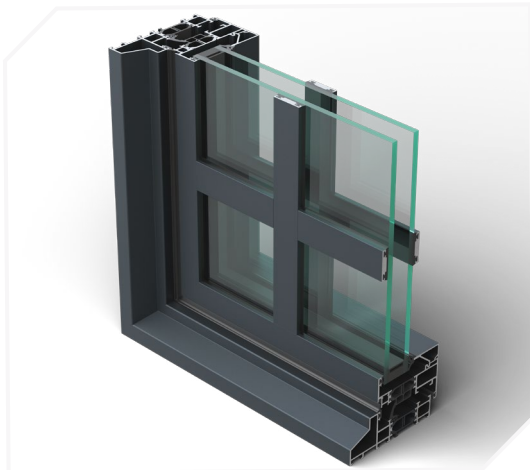
A Rejuvenated Building

Lee Mainwaring added: "The external windows are the focal new element of the façade renovation. The Novastruct window system, which was offered by the contractor as a more cost-effective alternative, effectively met the technical requirements needed whilst achieving a 1930s warehouse "Crittall" window lookalike. The windows have greatly enhanced the existing façade as well as referring to the building's history with its design. The final product was of great quality and in keeping with the design concept."

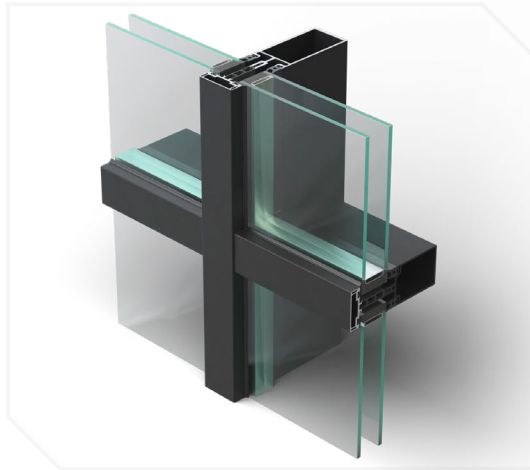
He concluded: "The façade has been visually transformed, in part through the addition of the new windows that are perfectly in keeping with the heritage of the building. From a previously dilapidated appearance, the building has been rejuvenated. We are extremely happy with such an incredible looking product."



Product Specification Highlights



GT 70 S Open-In Window



FSX 100 50mm Curtain Wall System



DSX 190 TB Door

Novastruct UK

Astmoor Road
Astmoor Industrial Estate
Runcorn, Cheshire
WA7 1QQ
United Kingdom

Tel.: + 44 (0)1928 502500
Mail: Sales.UK@novastructeurope.com

www.novastructeurope.co.uk

Shape
your vision

 nova
struct®