

# Case Study

Hale Wharf, London

Residential

Shape  
your vision

# Major Regeneration

Hale Wharf was highlighted as one of the Mayor of London's key housing developments.

The project was designed to play a significant role in fulfilling the London Mayor's and the local Council's goal of building 2,000 new homes in Tottenham Hale, forming a residential-led, mixed-use development situated on the River Lee Navigation.



**“A residential-led mixed-use development”**



Building: Hale Wharf  
Location: London  
Architect: Allies and Morrison  
Main Contractor: McLaren Construction  
Installer: JPJ Installations

# Exceptional Development

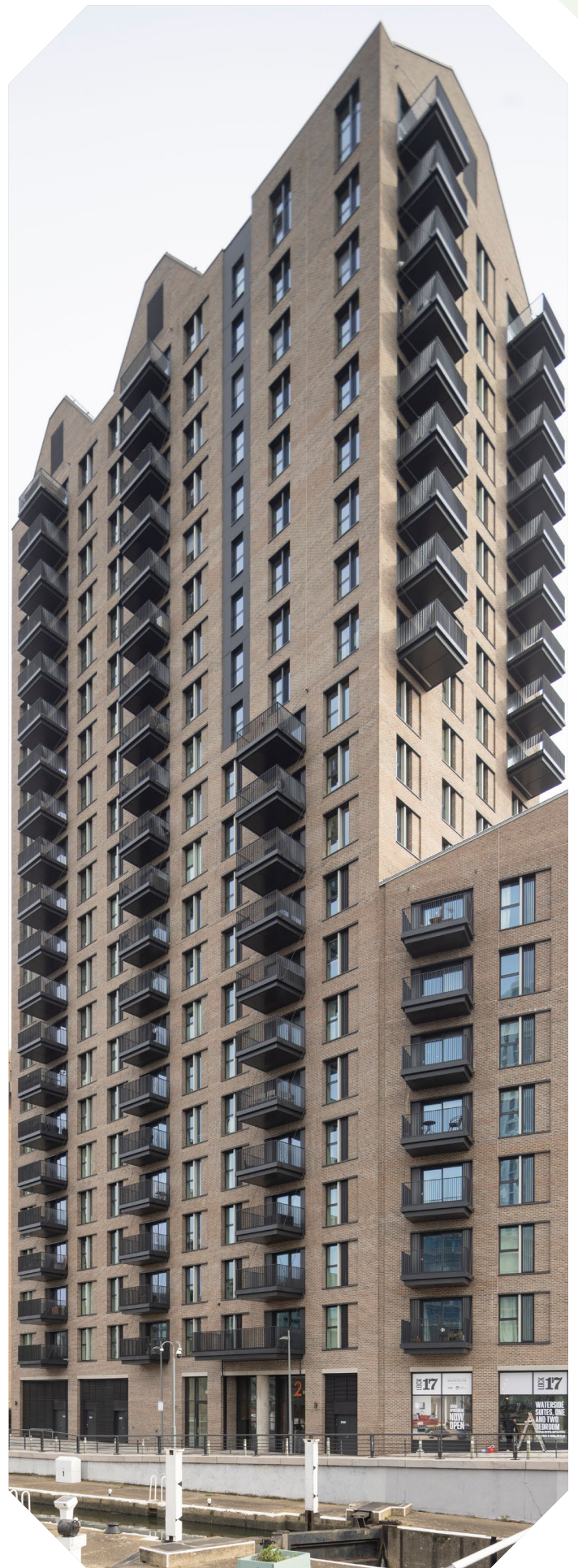
Novastruct played its part in the impressive Hale Wharf regeneration project by supplying our FSX 100 Curtain Wall System, known for its excellent thermal performance and flexibility of design choice.

The system features on both the ground floor retail and communal entrances of the 21-Storey (Block A) and 15-Storey (Block B) Buildings.

It also features our DSX 190 TB Doors on Block B that excel in high-traffic environments due to its robust and welded construction.

The one and two-bedroom apartments are also fitted with Novastruct's WSX 720 Reflex Open-Out Casement Windows,

Residents have access to their balconies and the far-reaching city views which help set this exceptional development apart.

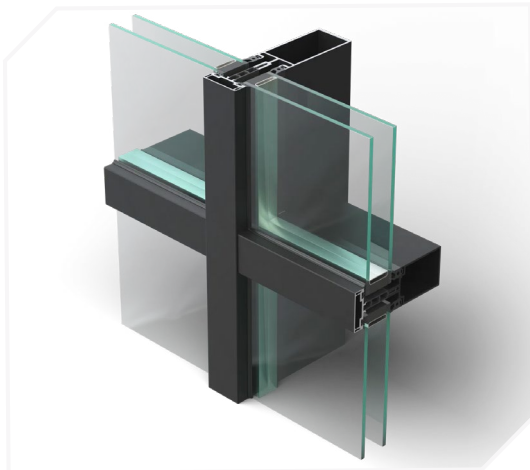


# Visually Striking

The project, designed by Allies and Morrison and built by Main Contractor McLaren Construction, was installed by our approved specialist subcontractor JPJ Installations. It provides Tottenham Hale with 249 stunning new homes, modern retail spaces, and canal-side public areas in a visually striking and complimentary design.



# Product Specification Highlights



**FSX 100 50mm Curtain Wall System**



**WSX 720 Reflex Open Out  
Casement Window**



**DSX 190 TB Door**

**Novastruct UK**

Astmoor Road  
Astmoor Industrial Estate  
Runcorn, Cheshire  
WA7 1QQ  
United Kingdom

Tel.: + 44 (0)1928 502500  
Mail: [Sales.UK@novastructeurope.com](mailto:Sales.UK@novastructeurope.com)

[www.novastructeurope.co.uk](http://www.novastructeurope.co.uk)

**Shape  
your vision**

**nova  
struct®**