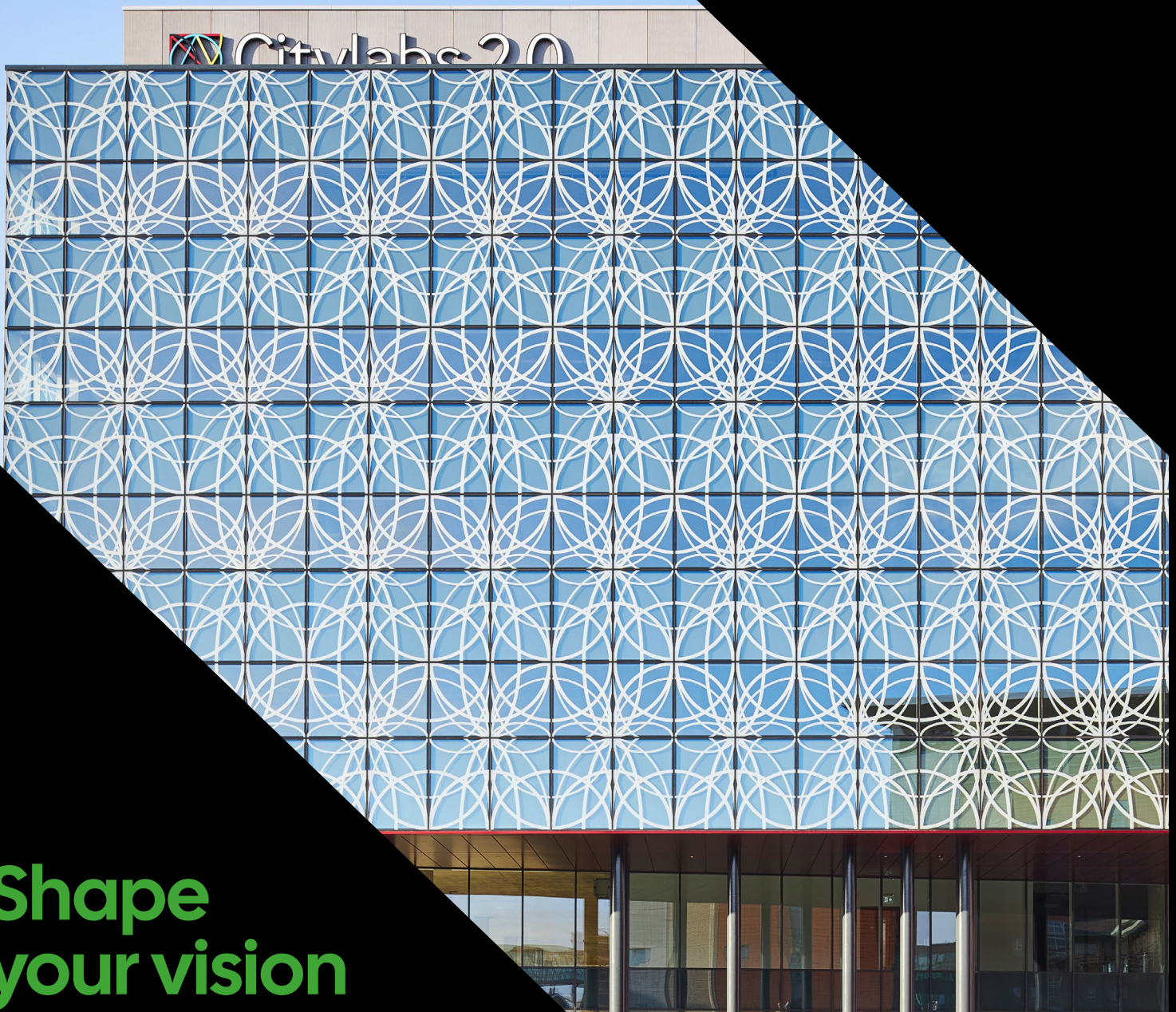


Case Study

Citylabs 2.0, Manchester

Healthcare



Shape
your vision

Campus Expansion

Meeting a quartet of criteria, Novastruct's FSX 110 SSG (Structurally Silicone Glazed) and FSX 100 capped aluminium curtain walling almost completely wraps the new Citylabs 2.0 development within the Oxford Road Corridor innovation district in Manchester, at the gateway to Europe's largest clinical-academic campus.

Citylabs 2.0 is part of an expansion to the Citylabs campus which is located at Manchester University NHS Foundation Trust's (MFT) Oxford Road hub and is a partnership between MFT and the UK's leading property provider to the science and tech sector, Bruntwood SciTech.

The project builds on the success of Citylabs 1.0 and provides world-class lab and office space for global diagnostics company QIAGEN for their Global Centre of Excellence for Precision Medicine.



“World-class lab and office space”



FSX 110 SSG curtain walling with flush silicone sightlines has been used throughout, while FSX 100 with 50mm sightlines features on the ground floor entrance of the 8,500m² state-of-the-art building designed by architects Sheppard Robson. The practice conceived Citylabs 2.0 as a block of accommodation with one elevational treatment, with recessed areas carved out of the main block clad in alternative materials.

Building: Citylabs 2.0
Location: Manchester
Architect: Sheppard Robson
Main Contractor: Sir Robert McAlpine
Installer: Bennett Architectural Aluminium Solutions

Etched Glazing Design

To realise this concept, the main body was formed in the FSX 110 flush cap-less curtain walling, with a digitally printed design to the glazing. The concrete frame of the building provides clear open floor plates to support different work typologies while the post-tensioned floor slabs provide clear, uninterrupted soffits for ease of services distribution.

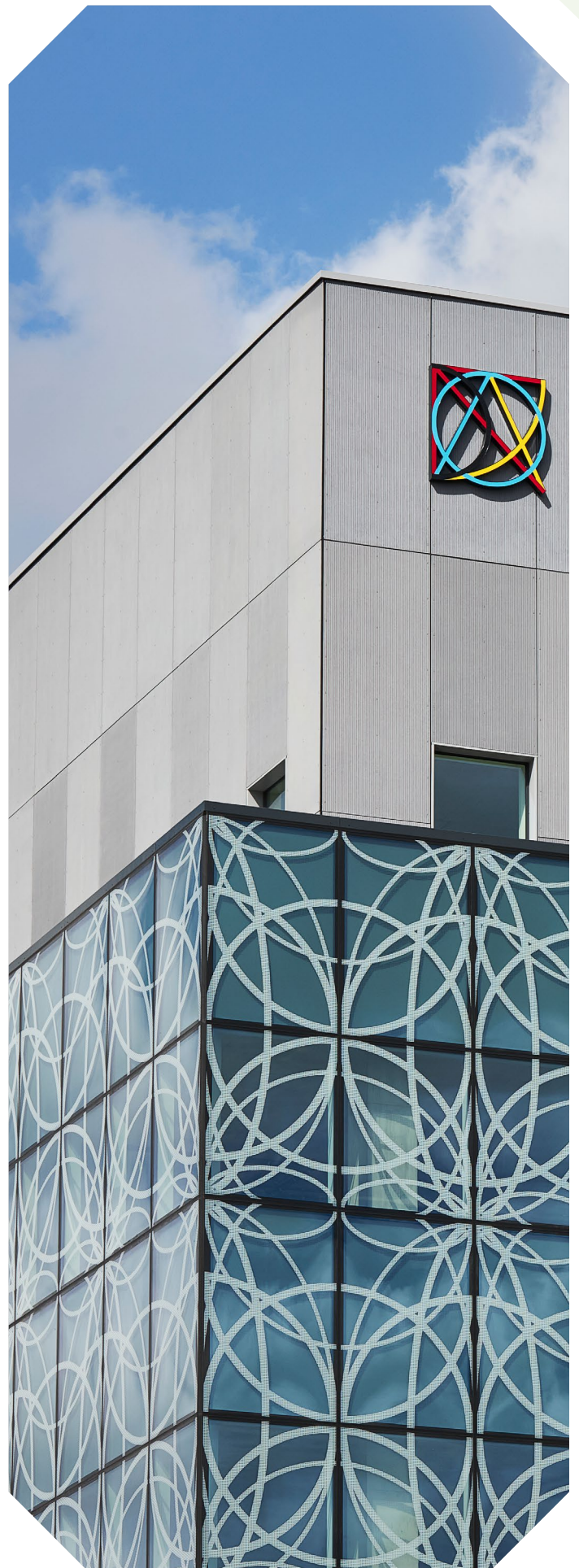
The recesses at level 5 and the plant room are clad in ribbed fibre cement panels, the recess on the Hathersage Road elevation is clad in louvres, and the recess to the main entrance is the Novastruct full-height FSX 100 curtain walling with accentuated vertical caps. The set back edges, and entrance canopy soffit, are clad in a bright coloured red anodized metal panel.

Sheppard Robson associate Mary-Ann Crompton said: "The subcontractor chose Novastruct as the best product to realise the design intent and it achieved the required performance specification in terms of aesthetics, thermal, acoustic and movement requirements."

The FSX 110 SSG curtain walling, with its wider 65mm back box, is typically specified to minimise building movement and at Citylabs 2.0 was complemented by the fritted glazing and spandrel panels.

"The existing adjacent buildings are Grade 2 listed and the cutbacks to Citylabs 2.0 have been organised to respond to the location and scale of them. The etched design to the glazing refers to details within the retained chapel which is to be refurbished as part of further future developments for Citylabs 3.0.

The glazed elements of the curtain walling form the major component of the elevational design and has helped to fulfil the aesthetic aspirations for the project. In addition, aluminium is totally recyclable and is therefore a good material to use. This characteristic helps towards achieving a sustainable design."



Unique and Striking

The Novastruct systems were installed for main contractor Sir Robert McAlpine over six months by teams of up to eight people from Novastruct-approved specialist sub-contractor and dealer Bennett Architectural Aluminium Solutions.

Director Rob Bennett said: "The project was fully enclosed in Novastruct curtain wall. It was a large project for us and had to be installed within 25 weeks. The FSX 110 curtain walling allowed increased building movement capability.

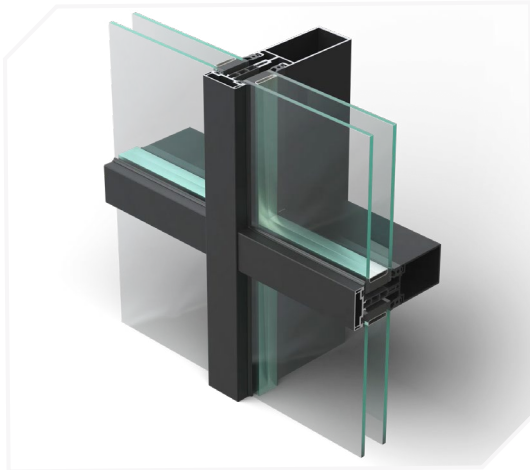
The glass on it was quite unique. We worked with the architect and designed a frit pattern that was used as part of solar control. It has a very unique whirl and is quite striking."

Mary-Ann said: "We have used Novastruct on many of our projects over the years and have found that the technical and sales departments are very helpful with providing information at the early stages of design."

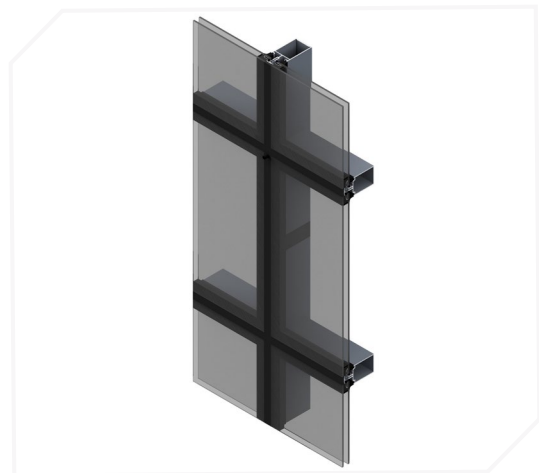
Businesses which locate to Citylabs have direct access to MFT's specialist clinical resources and expertise from researchers, clinicians and procurement teams as well as Bruntwood SciTech's specialist growth support and events programme, including access to funding, talent, new markets and academic connections.



Product Specification Highlights



FSX 100 50mm Curtain Wall System



FSX 110 SSG Curtain Wall System

Novastruct UK

Astmoor Road
Astmoor Industrial Estate
Runcorn, Cheshire
WA7 1QQ
United Kingdom

Tel.: + 44 (0)1928 502500
Mail: Sales.UK@novastructeurope.com

www.novastructeurope.co.uk

**Shape
your vision**

**nova
struct®**